



KONE ProSpace™ Plus

Compact lift system for existing buildings

Unique, compact and flexible

Retrofitting a lift in an existing building pays off for owners in the long term. This is because a lift improves convenience, attracts new tenants and increases the value of your property – in short, you are future-proofing your building!

The extremely compact KONE ProSpace™ Plus is quick to install and has been designed specifically for retrofitting into narrow stairwells of low and medium height. With its self-supporting shaft, no machine room is needed and the pit only needs 10 cm or a ramp.

Benefits at a glance

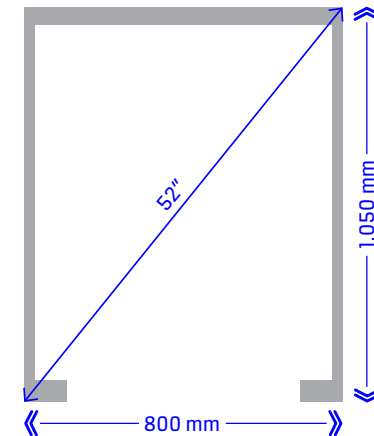
- Compact design can be installed in most stairwells
- Hardly any structural alterations to the building are required
- Quick installation thanks to pre-assembled components
- No machine room
- Safety for users thanks to the fully-enclosed car and car door
- Possibility to reduce pit down to 100 mm
- Low energy consumption



1

SPACE-EFFICIENT

The smallest KONE ProSpace Plus measures 800 mm x 1,050 mm (shaft width x depth) and can even fit into very small stairwells.



2

SAFE AND CONVENIENT

The KONE ProSpace Plus has a fully-enclosed car with automatic car doors. As an option it can also be equipped with automatic door openers on the landings. The two-sided through-type cars make entry and exit easy on the landings or half landings.

3

ECO-EFFICIENT

The lift's compact drive unit consists of a belt drive and gear motor and is attached to the uppermost landing stop above the door and does not require a separate machine room.

4

QUICK AND EASY TO INSTALL

The space-saving and self-supporting shaft construction can be installed very quickly. The weight of the lift is transmitted to the base of the shaft. This avoids stresses in the stairs or stairwell walls. It can be installed without major alterations to the fabric of the building and without any stress on the building structure.

From classic to modern: the perfect look

You can create the lift style that suits your building
– and your KONE contact will be pleased to help you.

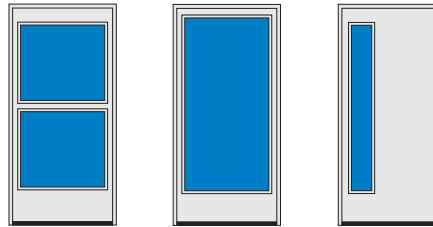
Car ceiling



Surface: Painted steel, RAL 9010
Lighting: Round LED spotlights

The number and positioning of LED spotlights is subject to the car dimensions.
The unit size of the LED lighting is subject to the car dimensions.

Shaft doors



1d

1g

1h

- Aluminium; Standard RAL colours selectable, as standard in the colour of the shaft frame
- Available with automatic door openers
- Some door types are also available fire-resistant and fire-rated

Car door



Aluminium automatic doors
with a small footprint

Car walls

PLATAL



Oak



White Oak



Cherry



Walnut

PAINTED STEEL



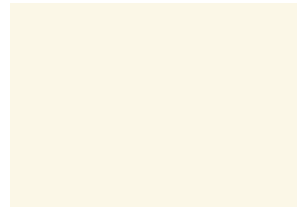
Mandarin Orange



Lime Green



Lotus Blue



Snowberry White

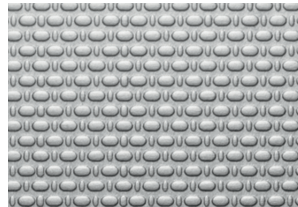
STAINLESS STEEL



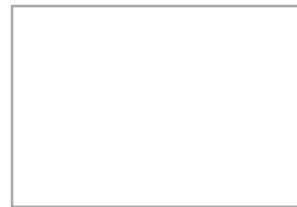
Asturias Satin



Murano Mirror



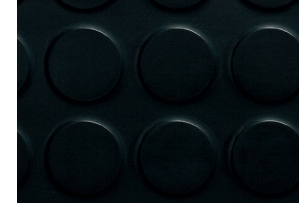
Flemish Linen



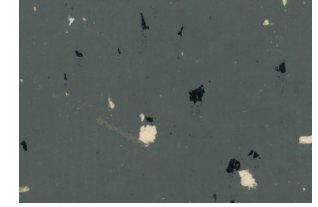
Local flooring

Car flooring

RUBBER



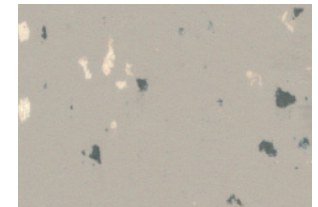
Dallas Black



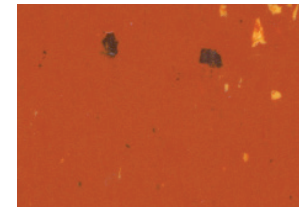
Smoke Gray



Denver Gray

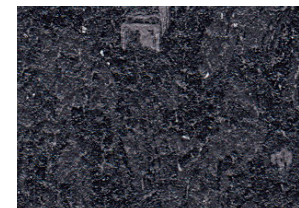


Shell Gray

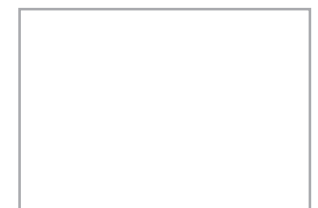


Coral Red

VINYL



Flakey Gray



Local flooring

Signalisation

Half-height car panel, surface-mounted



Car panel

Cover plate material:
Brushed stainless steel
Display: Segmented LCD



Landing stop panel



Landing stop panel with display



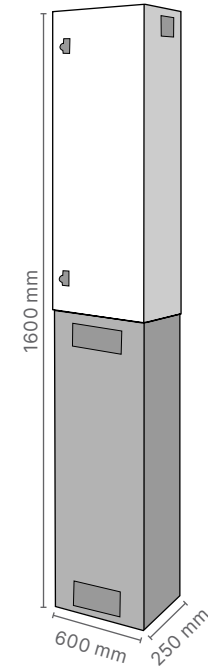
Landing stop display



Desk panel (optional)

Control cabinet

Paint in the shaft colour.



Handrails



HR34
Round, with bent ends
Aluminium (LBE) with black end caps



HR64
Round, with bent ends
Surfaces:
Brushed stainless steel
Mirror-polished stainless steel
Brushed stainless steel, golden

Foldable flip seat



Laminate
Black

Door handles



Aluminium
Standard design



Oak



Stainless steel

Shaft frame and glazing

The shaft of the KONE ProSpace™ Plus has glass panels on all sides to let in light and convey a more spacious feel.



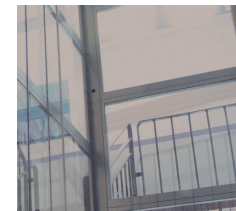
Clear



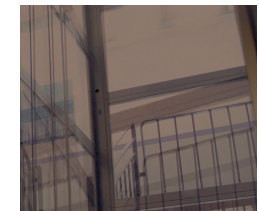
Ocean 1



Ocean 2



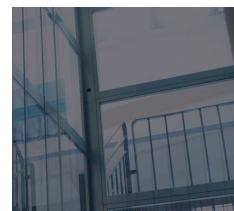
Bronze 1



Bronze 2



Smoke 1



Smoke 2



Frosted 1



Frosted 2

RAL 9010 is the standard colour. Different shades are possible.

Different RAL shade:

Frame



Fully glazed steel frame



Steel frame cladding



Partially glazed steel frame
Closed surfaces can be selected by series

Other options



Windows in the side walls

Window in the back wall

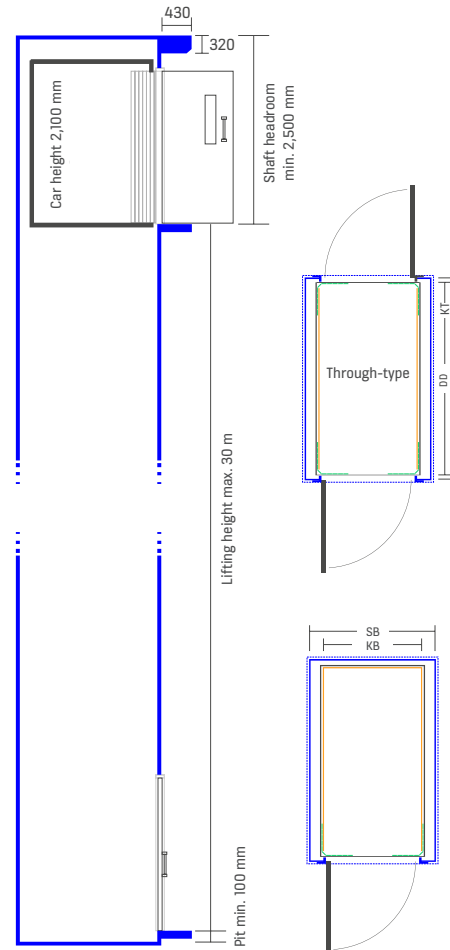
- Mirror on the back wall of the car; EN 81-70 compliant
- Walls in polished stainless steel (Murano Mirror) can be used as vandal-proof mirrors
- Visual cover plates under the car and in the door frame
- Extra high doors (2,100 mm) and car heights (2,200 mm)
- Safety options comply with DIN EN 81-73 "Behaviour of lifts in the event of a fire"
- Call buttons can be installed separately from the lift
- Car with through-type function (two car doors opposite each other)
- Accessible features: Voice announcements in the car, Braille signalisation, option for 2nd control panel to be a desk panel
- Shaft doors can be created in the same or a different, contrasting standard RAL colour
- Key switch in the car or on the landing stop
- Two-way communication system for emergency call connection
- Use of a ramp if a pit is not structurally possible

Technical specifications

These technical data are to be used for your preliminary planning.
Your KONE specialist will create the technical construction drawing.

KONE ProSpace™ Plus standard dimensions*												
External shaft depth (mm)	External shaft width (mm)											
	800	850	900	950	1,000	1,050	1,100	1,150	1,200	1,250	1,300	
1,050	•											
1,100	•	•	•									
1,150	•	•	•									
1,200	•	•	•	•					•			
1,250	•	•	•	•	•	•	•		•			•
1,300	•	•	•	•	•	•	•		•	•	•	
1,350	•	•	•	•	•	•	•	•	•	•	•	•
1,400	•	•	•	•	•	•	•	•	•	•	•	•
1,450	•	•	•	•	•	•	•	•	•	•	•	•
1,500	•	•	•	•	•	•	•	•	•	•	•	•
1,550	•	•	•	•	•	•	•	•	•	•	•	•
1,600	•	•	•	•	•	•	•	•	•	•	•	•
1,650	•	•	•	•	•	•	•	•	•	•	•	•
1,700	•	•	•	•	•	•	•	•	•	•	•	•
1,750	•	•	•	•	•	•	•	•	•	•	•	•
1,800	•	•	•	•	•	•	•	•	•	•	•	•
1,850	•	•	•	•	•	•	•	•	•	•	•	•
1,900	•	•	•	•	•	•	•	•	•	•	•	•
1,950	•	•	•	•	•	•	•	•	•	•	•	•
2,000	•	•	•	•	•	•	•	•	•	•	•	•
2,050	•	•	•	•	•	•	•	•	•	•	•	•
2,100	•	•	•	•	•	•	•	•	•	•	•	•
2,160	•	•	•	•	•	•	•	•	•	•	•	•

Frame dimensions



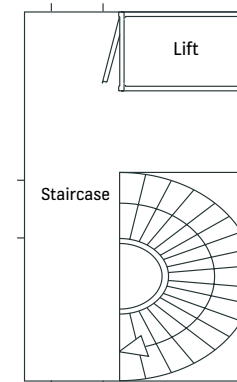
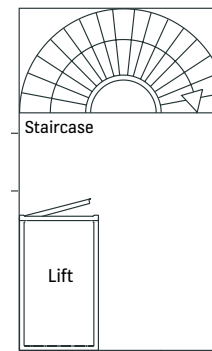
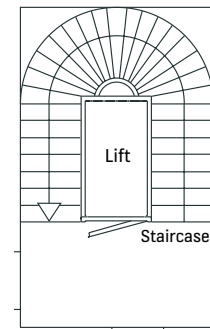
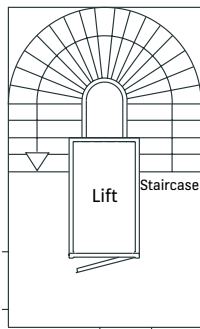
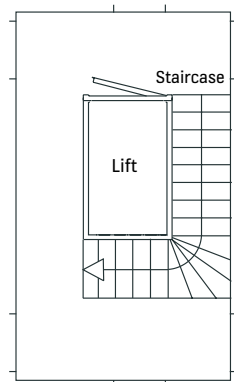
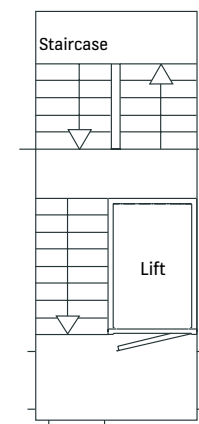
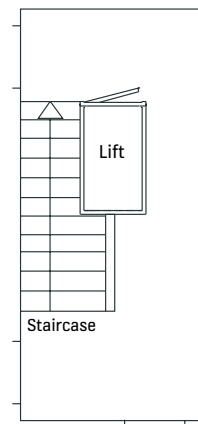
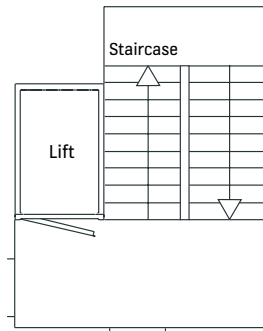
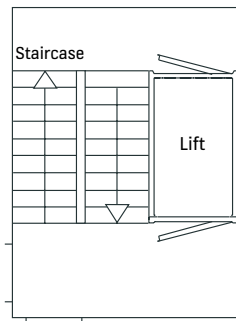
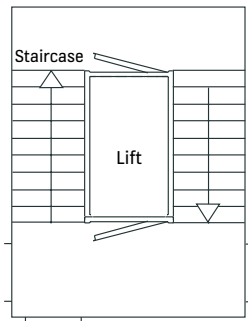
- Max. lifting height: 30 m
- Speed: 0.6 m/s
- Max. number of landing stops: 16
- Persons/rated load: Up to 9 persons/675 kg
- Shaft headroom: 2,500 to 3,500 mm
- Pit: 100 to 1,000 mm
- Complies with European lift standards EN 81-20 and EN 81-21
- Power: 8.5 kW, 16 A fuse in the control cabinet
- Power supply: three-phase, 400 V, 50 Hz (main fuse 3 x 16 A)
- Shaft door: manual or automatic revolving door
Car door: automatic link sliding door
- Steel shaft with glass or sheet metal cladding
- Emergency call device according to European standard

*Valid when EN 81-21 is applicable.
For further options, please contact your personal contact.

Technical specifications

- Internal car width = external shaft width - 200 mm
- Internal car depth = external shaft depth - 150 mm
- Required free height = shaft height + 40 mm
- Door width = car width up to 900 mm, wider cars with doors of 900 mm (standard) or 1,000 mm (option) – exceptions reserved
- Car height = 2,100 mm
- Door height = 2,000 mm
- The items marked blue in the above table are not available with the shortened pit (100 mm)
- Through-type function for all sizes and pit of 1,000 mm
- Through-type function with shortened pit (100 mm) available for a shaft depth of 1,650 mm and larger
- For other configurations, please speak to your KONE specialist advisor

Placement options



Service for all systems

We talk to you so we can best understand your needs and can consider the requirements of your facilities in the building and those of your end users. Our service recommendation is tailored precisely to your requirements. You can see at a glance which services are included in your solution – and which are not. And you can then make direct readjustments.

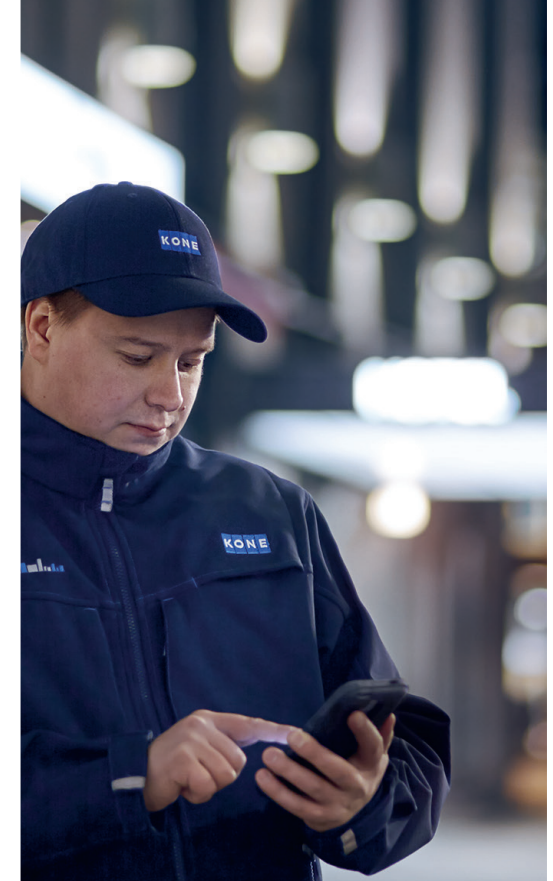
Services at a glance

- KONE modular maintenance
- Emergency & passenger release service
- Emergency call centre & fault response
- Assistance with recurring inspections
- Electronic & manual function check
- Monitoring & analysis with 24/7 Connected Services
- Troubleshooting & service repairs
- Special cleaning
- Availability guarantee
- Maintenance of shaft smoke extraction
- Transparency through KONE Online and KONE Mobile



Preventive maintenance

We are committed to your lifts – of every manufacturer and type – for the lifetime of a building. Thanks to our EN 13015-certified KONE modular maintenance, our service technicians are able to preventively detect and correct errors even before downtimes occur. This means you can operate your systems safely, prevent unnecessary faults and optimise their performance.



Emergency call connection

Our reliable emergency call system ensures you fulfil your operator's obligation. The two-way communication system is certified and can be used for lifts of any type and from any manufacturer. It establishes permanent voice contact between any trapped persons and our permanently staffed position, as required by the German industrial safety regulation. And that's 24 hours a day, 365 days a year.



Your new lift will not be commissioned by an approved supervisory authority without an emergency call system.



We move more than 1 billion people worldwide every day! Because our mission is to constantly improve the flow of urban life. Our vision is to provide the best People Flow experience for users of our lifts, escalators and automatic doors. We deploy digital, networked solutions that make the smooth flow of people and goods in buildings safer and more convenient than ever before. The interface of our unparalleled, cloud-based digital platform enables us to connect products, applications and services from KONE, our KONE partners and third parties. This is how we create smart, flexible solutions for the modern city that can adapt to the changing wishes of our users and customers. Our customer commitment underpins all KONE solutions. This makes us a reliable and innovative partner over the entire life cycle of the building. Today and in the future. KONE is a publicly listed corporation (NASDAQ OMX, Helsinki). In 2022 it generated annual revenues of EUR 10.9 billion with around 60,000 employees in over 60 countries worldwide, and it manages over 1 million facilities through its over 1,000 branches. The company's headquarters are located in Helsinki, Finland.

KONE

kone.com

This publication is for general informational purposes only and we reserve the right at any time to alter the product design and specifications. No statement in this publication shall be construed as a warranty or condition, express or implied, as to any product, its fitness for any particular purpose, merchantability, quality or representation of the terms of any purchase agreement. Minor differences between printed and actual colours may exist. KONE MonoSpace®, KONE EcoDisc®, KONE Care®, KONE People Flow®, KONE UltraRope® and KONE NanoSpace™ are registered trademarks of KONE Corporation. Copyright © 2023 KONE Corporation.

**Dedicated to
People Flow™**